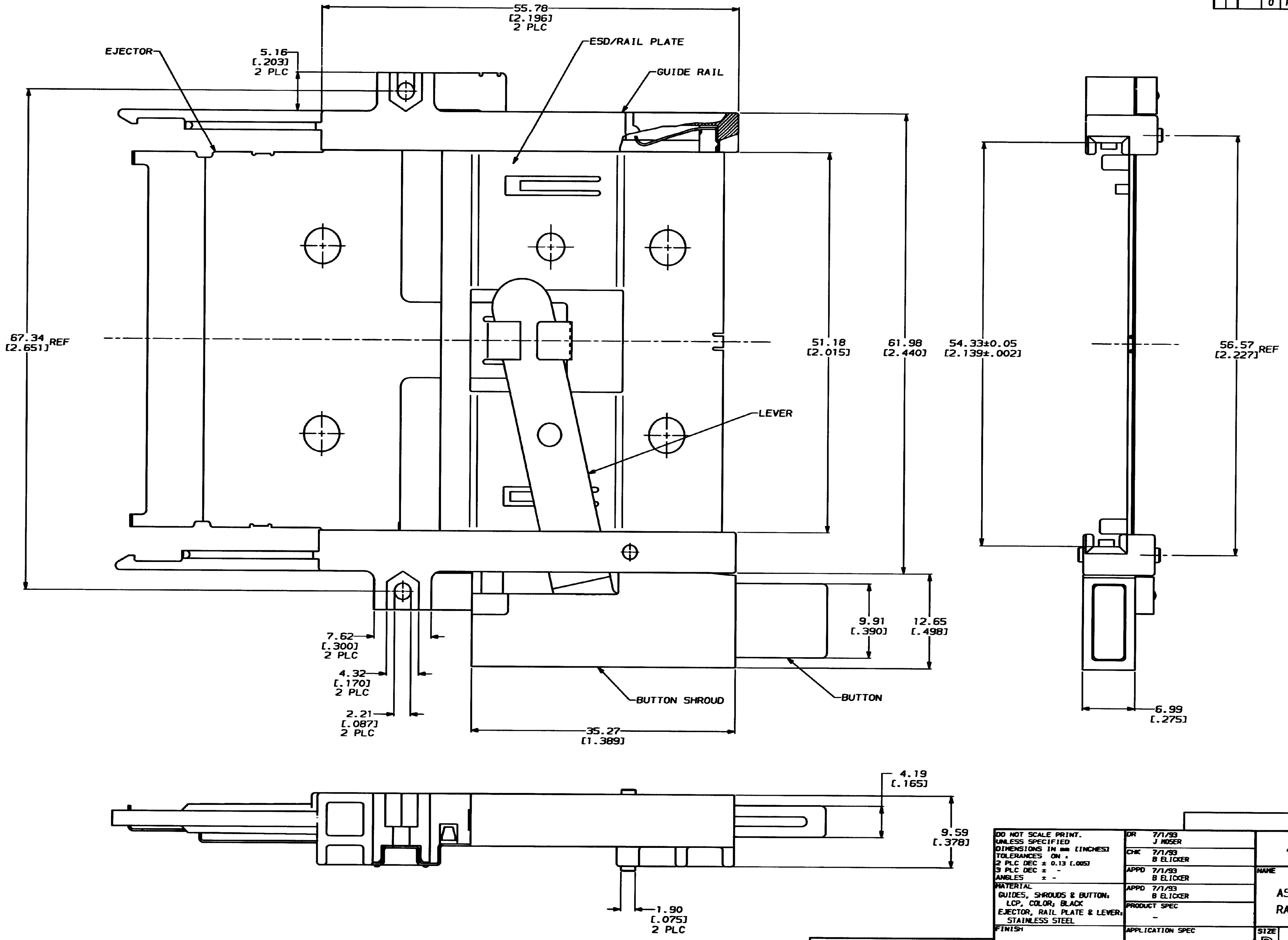


THIS DRAWING IS UNPUBLISHED. RELEASED FOR PUBLICATION. 19
 © COPYRIGHT 19 BY AMP INCORPORATED. ALL INTERNATIONAL RIGHTS RESERVED.

REV. NO.		DATE		DESCRIPTION		DATE	APPD.
AD	39			0	RELEASED PER PPR	7/1/93	BE



THIS DRAWING IS A CONTROLLED DOCUMENT FOR AMP INCORPORATED. IT IS SUBJECT TO CHANGE AND THE CONTROLLING ENGINEERING ORGANIZATION SHOULD BE CONTACTED FOR THE LATEST REVISION.

DO NOT SCALE PRINT. UNLESS SPECIFIED DIMENSIONS IN MM (INCHES) TOLERANCES ON + 2 PLC DEC ± 0.13 (.005) 3 PLC DEC ± - ANGLES ± - MATERIAL: GUIDES, SHROUDS & BUTTON: LCP, COLOR, BLACK EJECTOR, RAIL PLATE & LEVER: STAINLESS STEEL FINISH: -	DR 7/1/93 J MOSER CHK 7/1/93 B ELICKER APPD 7/1/93 B ELICKER APPD 7/1/93 B ELICKER PRODUCT SPEC - APPLICATION SPEC - WEIGHT 18.1 GRAMS
---	--

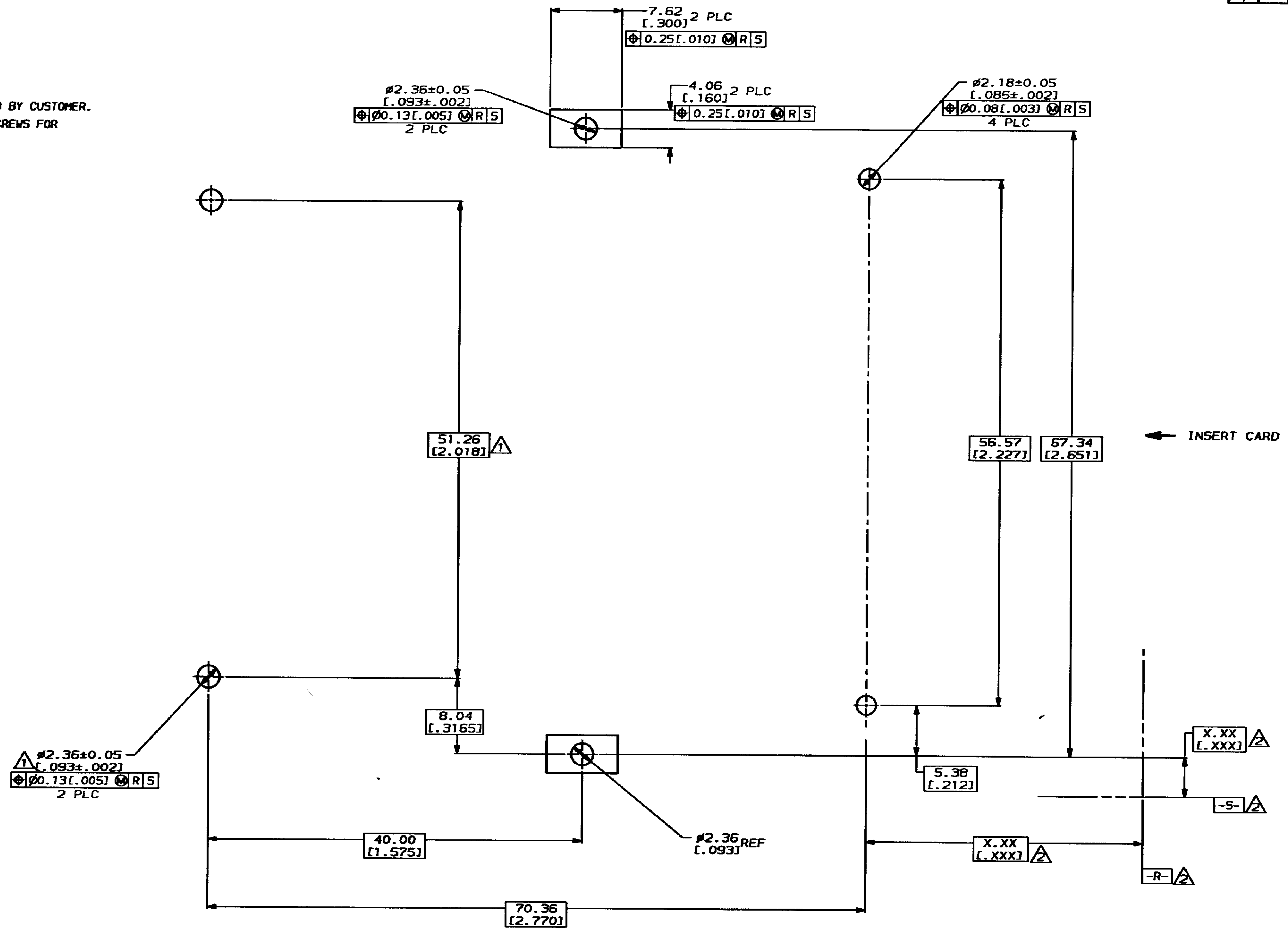
146020-1		PART NO	
AMP Incorporated Harrisburg, PA 17105-3608			
NAME			
ASSEMBLY, EJECTOR, LEFT BUTTON, RAISED HEIGHT, AMP MEMORY CARD			
SIZE	CAGE CODE	DRAWING NO	
D	00779	C-146020	
SCALE	4:1	SHEET	1 OF 2

CUSTOMER DRAWING

THIS DRAWING IS UNPUBLISHED. RELEASED FOR PUBLICATION .19
 © COPYRIGHT 19 BY AMP INCORPORATED. ALL INTERNATIONAL RIGHTS RESERVED.

LOC	DIST	REV	ZONE	LTR	DESCRIPTION	DATE	APPRO
AD	39				SEE SHEET ONE		

- 1. HEADER MOUNTING HOLE LOCATIONS
- 2. DATUMS & BASIC DIMENSIONS ESTABLISHED BY CUSTOMER.
- 3. ASSEMBLY REQUIRES USE OF 2-SIZE 2M SCREWS FOR FASTENING TO PRINTED CIRCUIT BOARD.



RECOMMENDED BOARD LAYOUT

DO NOT SCALE PRINT. UNLESS SPECIFIED DIMENSIONS IN mm (INCHES) TOLERANCES ON: 2 PLC DEC ± 0.13 (L.005) 3 PLC DEC ± - ANGLES ± -		DR 7/1/93 J MOSER		PART NO	
CHK 7/1/93 B ELICKER	APPD 7/1/93 B ELICKER	AMP AMP Incorporated Harrisburg, PA 17105-3608		NAME	
APPD 7/1/93 B ELICKER	PRODUCT SPEC	ASSEMBLY, EJECTOR, LEFT BUTTON, RAISED HEIGHT, AMP MEMORY CARD		SIZE D	CAGE CODE 00779
FINISH	APPLICATION SPEC	DRAWING NO C-146020		SCALE 4:1	SHEET 20F2
WEIGHT		CUSTOMER DRAWING			

THIS DRAWING IS A CONTROLLED DOCUMENT FOR AMP INCORPORATED. IT IS SUBJECT TO CHANGE AND THE CONTROLLING ENGINEERING ORGANIZATION SHOULD BE CONTACTED FOR THE LATEST REVISION.

CUSTOMER DRAWING